



Important information

Environment and Occupational Health and Safety at Nordjylland Power Station



2021

Version 9 - 12.01.2021

ENVIRONMENT AND OCCUPATIONAL HEALTH & SAFETY

Nordjylland Power Station has environment and occupational health and safety certification. All employees and suppliers working at Nordjylland Power Station must be familiar with the contents of this leaflet and comply with applicable Environmental and Health and Safety Legislation.

Environmental and occupational health and safety policies are posted at Nordjylland Power Station and can be handed out.

No work may be started without an agreement with your contact person at Aalborg Forsyning.

Any violation of environmental and health and safety rules may result in expulsion. If you work alone, remember to inform your contact person at Nordjylland Power Station of your whereabouts.

TAKE GOOD CARE OF YOURSELF!



Alcohol and drugs

Alcohol is strictly forbidden on Nordjylland Power Station premises. Suspected use of drugs will result in dismissal.



Smoking

Smoking is prohibited indoors and in specific outdoor areas. Please see Nordjylland Power Station's smoking policy.

HEALTH AND SAFETY AT WORK

Environment and occupational health & safety rules

You must abide by the regulations of Nordjylland Power Station.

If in doubt, ask your manager or your contact person at Aalborg Forsyning.

Job with work permit

For each job, a risk assessment must be conducted in agreement with your contact person.

Accidents at work

First aid equipment is available at Nordjylland Power Station (bandage boxes and defibrillators). Your contact person must be informed immediately of all occupational injuries.

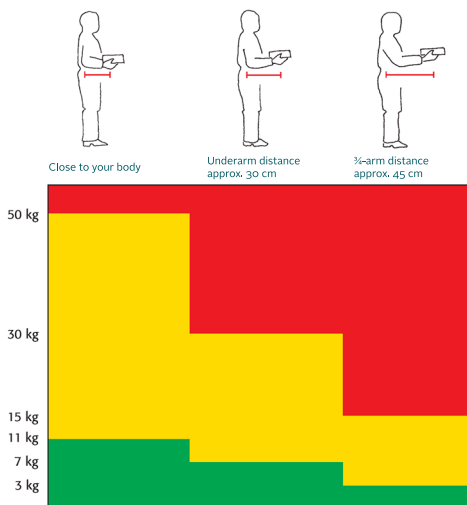
“Near-miss” accidents at work

Your contact person must immediately be informed of any accidents in the workplace, in which things might have gone wrong – e.g. tools dropped without hitting anyone.

ERGONOMICS AND HEAVY LIFTING

Remember

- Bend your knees and hips when lifting
- Assess the weight and turn the item so you have the heaviest side towards your body
- Tilt the workpiece for a higher grip point
- Grip securely
- Lift close to, and in the middle of your body



ENVIRONMENT

Planning

Plan your work to prevent emissions and chemical spillage.



Emissions and chemical spillage

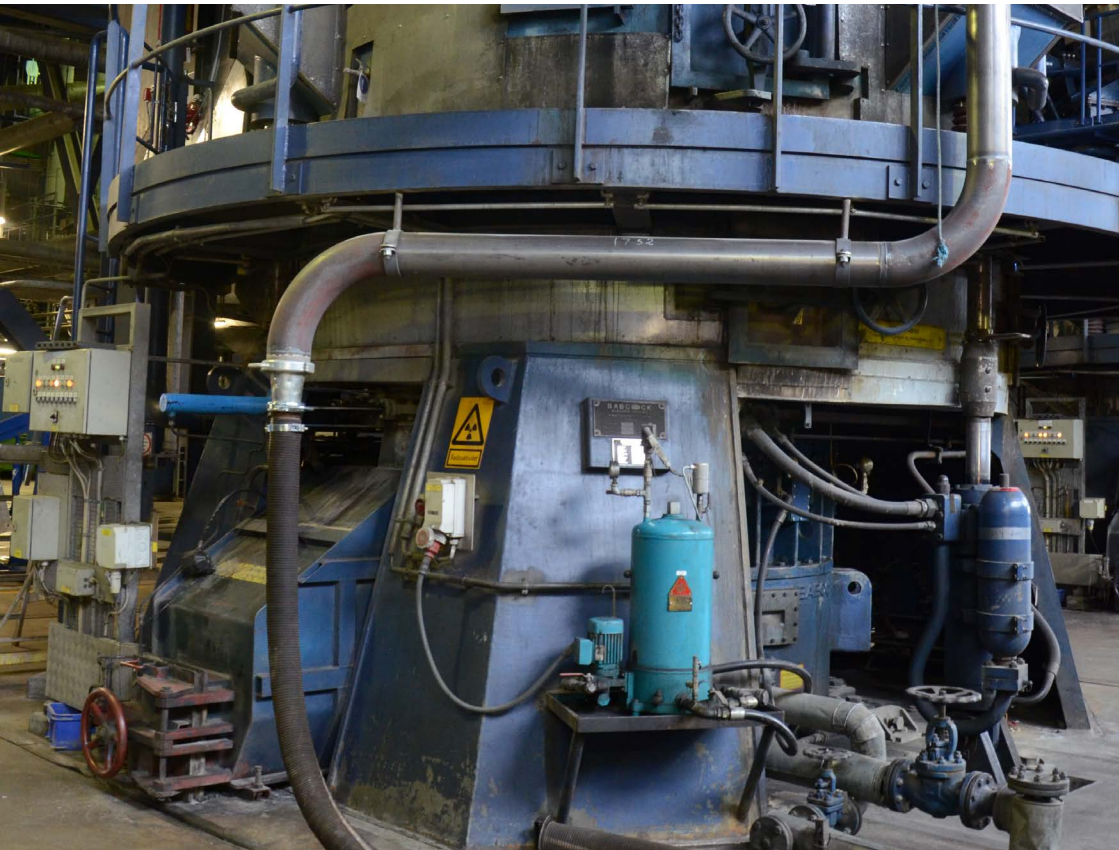
Be prepared in case it happens. Have rags, cat litter etc. ready.

Environmental accident

All environmental accidents must be reported immediately to your contact person at Aalborg Forsyning.

“Near-miss” environmental accidents

Your contact person must immediately be informed of any environmental accidents, in which things might have gone wrong – e.g. oil spills that are stopped before flowing in the drain or environment.



FIRE, EXPLOSION RISK AND HOT WORK

Nordjylland Power Station is subject to ATEX regulations. You may only work on welding, grinding or open fire jobs by agreement with your contact person.



Fire, explosion risk and hot work

Before starting work, check where the nearest firefighting equipment is located.

PERSONAL PROTECTIVE GEAR

TAKE GOOD CARE OF YOURSELF!

You must use personal protective equipment when required by workplace Regulations, signs, or when the law otherwise demands it.

Please note that safety shoes, helmets, glasses and long work trousers must normally be used for all coming-and-going and work at Nordjylland Power Station.

If in doubt, ask your manager or your contact person at Aalborg Forsyning.



PROTECTION AND ISSUE OF WORK PERMIT

If you are going to work in the Nordjylland Power Station facility, you must ensure that it is properly protected. The facility must be protected and provided with signs as below. You must be given the green light by your contact person before you start.

If in doubt, review the protection of the facility with your contact person at Aalborg Forsyning.



Do not operate

Work is in progress in the facility.

EQUIPMENT AND CERTIFICATES

Ancillary equipment

Electrical and mechanical equipment, lifting gear, ladders, safety equipment etc. brought in and used must be inspected and maintained in accordance with applicable legislation. Registration of any statutory inspections conducted must be available on request.

Training and certificates

If your task requires you to have undergone a statutory training course, you must be able to present your course certificate or other proof (forklift, crane, epoxy etc.).

Inspection

Random checks shall be carried out of compliance by suppliers with applicable legislation in terms of environment and health and safety at work, and with the guidelines described above.

For example, random checks will be conducted on:

- Whether lifting gear and power tools have been inspected
- Whether scaffolding complies with applicable legislation
- Whether necessary certificates have been granted

Inspection of ladders by app

There is a QR code attached to all ladders. It must be scanned with the camera on your mobile phone before use. Install a QR scanner if your mobile phone does not scan in the QR code.

The web browser opens automatically for information about the ladder and whether it is approved.

If the ladder has not been approved, it must not be used, and you must get in touch with your contact person at Aalborg Forsyning.

SUBSTANCES, MATERIALS AND CHEMICALS

You must bring and be familiar with the workplace regulations (WPR) regarding the substances and materials you use for the task.



Substances, materials and chemicals

All packaging containing chemicals that require labelling must be hazard labelled. Paint packaging must have clear MAL codes.

You must be familiar with the environmental and occupational safety and health instructions that apply to your work tasks.

If in doubt, ask your manager or your contact person at Aalborg Forsyning.

Remember

Remember to remove your chemical residues at the end of a job, unless otherwise agreed with your contact person.

WASTE



Waste may only be handed in at Nordjylland Power Station's waste sites by agreement with your contact person. The local rules for waste management must be observed.

IT SECURITY

When connecting local IT networks, components etc., Aalborg Municipality's common policies and rules regarding IT security must be complied with. It is important to ensure that your equipment does not contain viruses.

MEANS OF ACCESS

Access to Nordjylland Power Station is via a mechanical gate at the administration building or via Gate 2. Entry passes to Nordjylland Power Station are issued at reception.

You must use an entry pass to register arrival at, and departure from Nordjylland Power Station in the registration terminals at the gate. Registration of presence is a security measure and is used in the event of evacuation.

- Cars are only admitted with special permission.
- Nordjylland Power Station must be vacated no later than one hour after the end of working hours.
- The port area is only accessible if you need to work there.

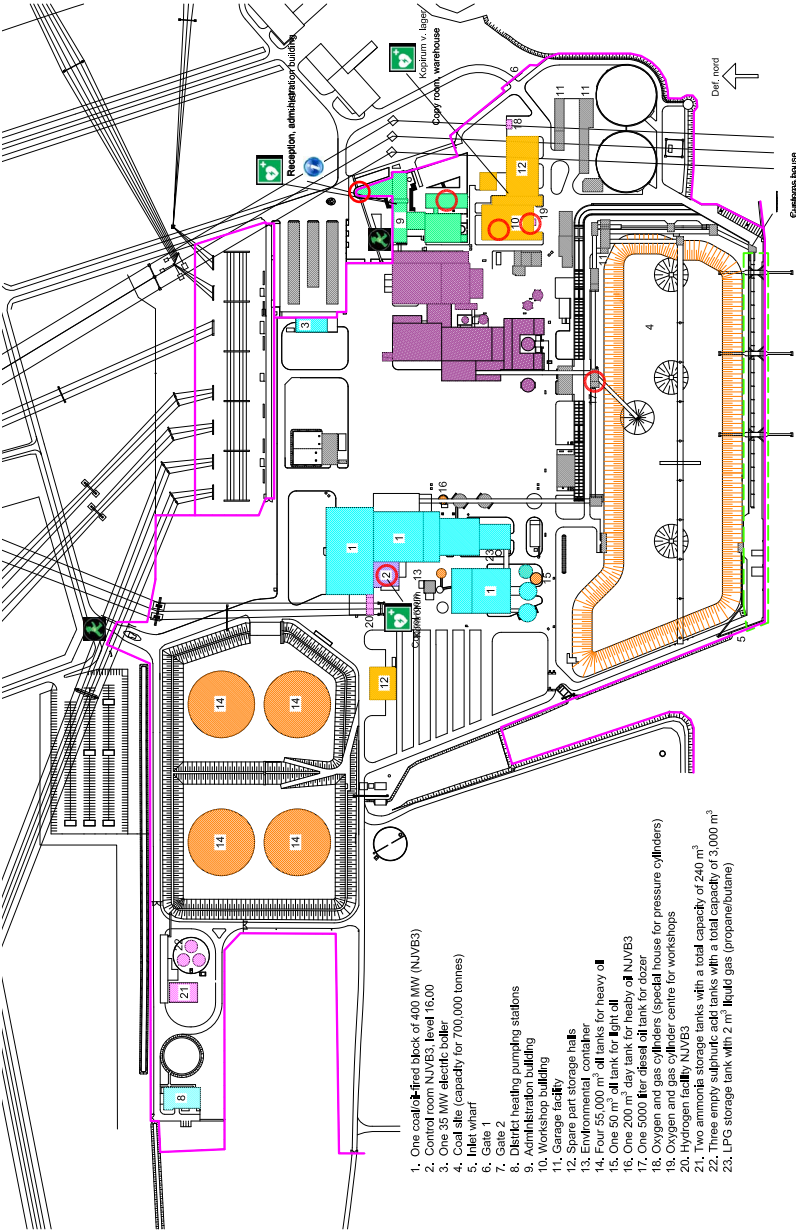
BEHAVIOUR AND DUTY OF DISCLOSURE

In the event of suspicious behaviour or coming and going outside areas where work is being performed, expect to be questioned by staff or the security company.

You must follow any instructions. If requested, you are obliged to provide name, company and contact person.

If in doubt, get in touch with your contact person at Aalborg Forsyning.

GROUND PLAN



1. One coal-fired block of 400 MW (NUVE3)
2. Control room NUVE3, level 16,00
3. One 35 MW electric boiler
4. Coal silo (capacity for 700,000 tonnes)
5. Inlet wharf
6. Gate 1
7. Gate 2
8. District heating pumping stations
9. Workshop building
10. Workshop building
11. Garage facility
12. Spare part storage halls
13. Environmental container
14. Four 55,000 m³ oil tanks for heavy oil
15. One 50 m³ oil tank for light oil
16. One 200 m³ day tank for heavy oil
17. One 5000 m³ oil tank for heavy oil
18. One 5000 m³ oil tank for heavy oil
19. Oxygen and gas cylinder centre for workshops
20. Hydrogen facility NUVE3
21. Two ammonia storage tanks with a total capacity of 240 m³
22. Three empty sulphuric acid tanks with a total capacity of 3,000 m³
23. LPG storage tank with 2 m³ liquid gas (propane/butane)

- Information, reception
- Evacuation collection
- Defibrillator
- Card reader
- Fence of Nordjylland Power Station
- Unit for port facility

0-OHB/BE112_I

REV: 25-AUG-2021

REMEMBER TO COMPLETE

The scope of the job: _____

Period: _____

Important phone numbers

Control room: _____

Environment and occupational health

and safety coordinator: _____

Contact person: _____

Environmental and health and safety information received: **Tick**

☐ The supplier's WRA

☐ Other

Contact person

Name: _____

Recipient

Name: _____

Company: _____

Mobile phone no.: _____

Handout Nefovej

Incident	Category	What to do?	What to do?
Accidents	Major accidents	<ol style="list-style-type: none">Stop the accident.<ol style="list-style-type: none">Stop machines.If possible, cordon off the area.Administer life-saving first aid.Call the emergency centre. Tel.: 112Provide: Name, Phone number:What happened?Where did it happen?Who has been injured?Call the control room. Tel.: 99545620 or 27875735Report the incident to the occupational health and safety organisation.	Immediate superior Environment and Occupational Health and Safety Coordinator Own Occupational Health and Safety Representative
	Minor accidents	<ol style="list-style-type: none">Stop the accidentAdminister regular first aidContact your own doctor or the emergency medical service Tel.: 70 150 300. Please note that you must not drive directly to the emergency room in the event of minor accidents.Report the incident to the occupational health and safety organisation.	
	Near-miss accidents	<ol style="list-style-type: none">Stop the incidentCordon off the area to prevent further incidentsReport the incident to the occupational health and safety organisation.	
Fire disaster Ammonia spillage Bomb threat	Help	<ol style="list-style-type: none">Call the control room. Tel.: 99545620 or 27875735Provide: Name, Phone numberWhat happened?Where did it happen?Leave operation of the alert to the control room <p>Report the incident to the occupational health and safety organisation.</p>	
Evacuation	Siren 4 x high notes of 12 secs. duration	<ol style="list-style-type: none">Everyone must immediately head for the nearest assembly point and register with the evacuation reader.The control room is in charge and sounds the alarm when the danger is over.	Assembly points <ul style="list-style-type: none">• Workshop office• Fuel office• Canteen• Control room Block 3