

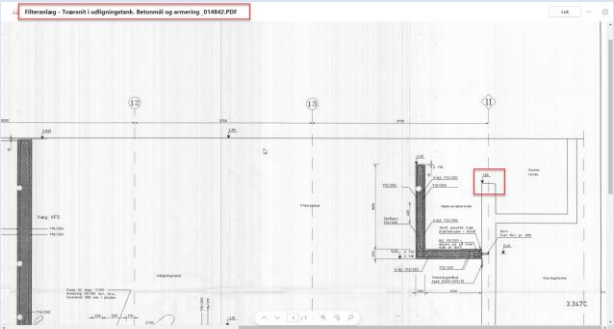
Aarhus Vand A/S

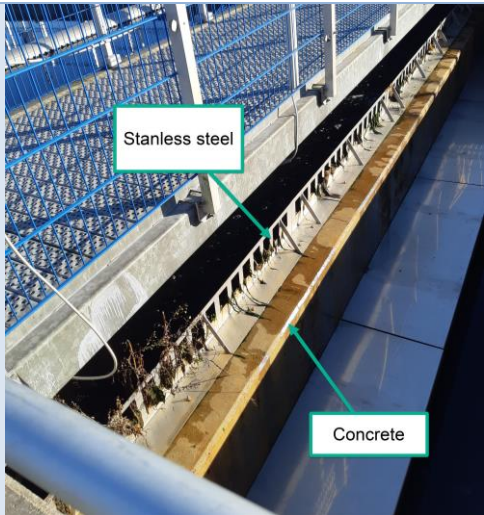
# Correction sheet

**New ozone treatment process at Egaa Wastewater Treatment Plant**



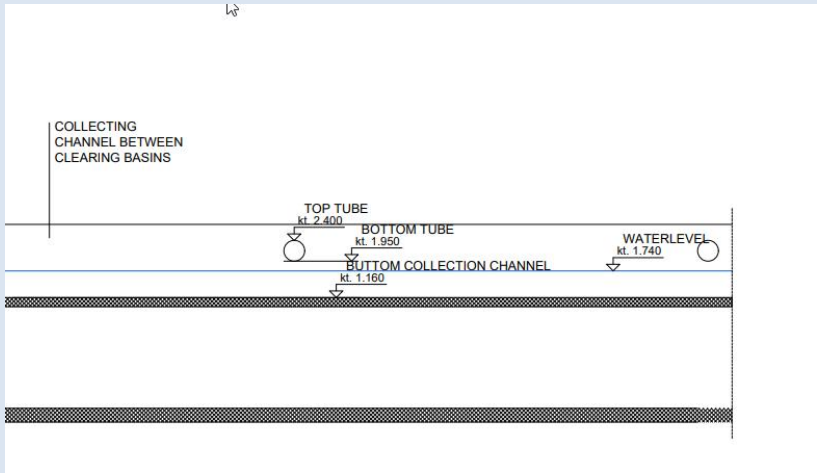


Date	Subject	Original text / Question	Applicable text / Answer
19-09-2023	Vol 2 – Condition of contract  /12. Liability	With the exception of product liability, the Contractor is liable under the ordinary rules of Danish law for personal injury and/or damage to property caused by faults or negligence on behalf of the Contractor or others for whom the Contractor is responsible. The same applies to liability for damage to immovable and movable property	ABT18 is applicable to this contract.
19-09-2023	Vol 2 – Condition of contract  /15. Agreed penance	In the event of late delivery, a penance of 1‰ of the contract sum shall be imposed on the Contractor per working day or part thereof (Monday to Friday, excluding public holidays) by which the delivery dates and final handover is exceeded, however by a maximum of 10%, after which the Contractor is in default, which entitles the Client to terminate the agreement.	In the event of late delivery, a penance of 1‰ of the contract sum shall be imposed on the Contractor per working day (Monday to Friday, excluding public holidays) by which the delivery dates and final handover is exceeded, however by a maximum of 10%, after which the Contractor is in default, which entitles the Client to terminate the agreement.
08-11-2023	Vol 5 – Drawing and supplementary information  /Question	<p>Could you please provide following information:</p> <ol style="list-style-type: none"><li>1. Level (kote) for emergency overflow distribution channel to bypass sandfilters.</li><li>2. Level (kote) outlet weir clarifiers to outlet channel.</li><li>3. Normal water level in clarifiers.</li><li>4. Water level in sandfilters just before backwash.</li></ol>	<p><b>1. Level (kote) for emergency overflow distribution channel to bypass sandfilters.</b></p> <p>The kote is on Drawing “Filteranlæg - Tværsnit i udligningstank. Betonmål og armering _014842.pdf” under “Vol 5 – Drawing and supplementary information” → “OzEgaa Appendix 5E - Drawings of construction” → “Sandfilters”</p> <p>See picture below.</p>  <p><b>Note!</b> This is the level of the concrete. The emergency overflow is elevated with stainless steel with holes. The kote of the stainless-steel construction is not known.</p> <p>See picture below.</p>

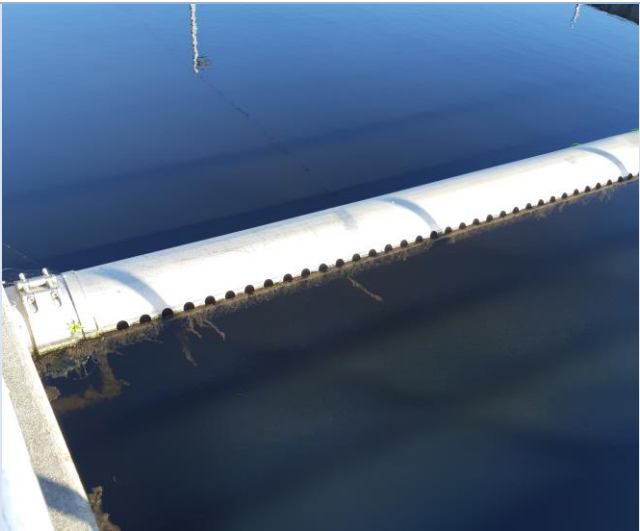


**2. Level (kote) outlet weir clarifiers to outlet channel.**

Below is a section of drawing “1287 AN(F) 30.00-AN(F) 30.20 - Snit klaringstank” under “Vol. 5 - Drawings and supplementary information” → “OzEgaa Appendix 5H - Technical drawings related to hydraulics”. The kote for bottom tube (1.950) is level for the outlet weire/tube.



Below is a picture of the tube.



3. Normal water level in clarifiers.

Normal water level is about 3,5 meters in the clarifiers. The level is measured with a radar.

4. Water level in sandfilters just before backwash.

The water level in sand filters, both during operation and when they are sent backwashing, is 50 cm above the sand level - i.e. a fixed height. The level in the sand filters on Egå is constant, it is maintained/controlled by adjusting the drain valve.

29-11-2023 OzEgaa Appendix 1e  
– Functional guaran-  
tees  
  
2.2 Verification  
method

Test no.	Load	Date	Start time	Duration	Produced ozone	Guaranteed consumption	Measured energy consumption	Ozone concentration in gas	Ozone concentration in offgas	Ozone MTE	Test no.	Load	Date	Start time	Duration	Produced ozone	Guaranteed consumption	Measured energy consumption	Ozone concentration in gas	Ozone MTE
	[%]				[Kg O <sub>3</sub> /h]	[Kwh/kg O <sub>3</sub> ]	[Kwh/kg O <sub>3</sub> ]	[Kwh/kg O <sub>3</sub> ]	[ppm]	[%]		[%]				[Kg O <sub>3</sub> /h]	[Kwh/kg O <sub>3</sub> ]	[Kwh/kg O <sub>3</sub> ]	[Kwh/kg O <sub>3</sub> ]	[%]
1	100			1 hour							1	100			1 hour					
2	80			1 hour							2	80			1 hour					
3	40			1 hour							3	40			1 hour					
4	10			1 hour							4	10			1 hour					
5	60			48 hours							5	60			48 hours					

For verification of ozone in the off-gas, the Contractor must make it likely that the average ozone concentration in the offgas is under the guaranteed value by online measurement of ozone in the off-gas for a week during commissioning before the Client is taking over the plant. The verification period must be agreed with the Client before start-up.  
After the Client has taken over the plant, the average ozone concentration in the offgas is verified by online measurements during the verification of process guarantee.